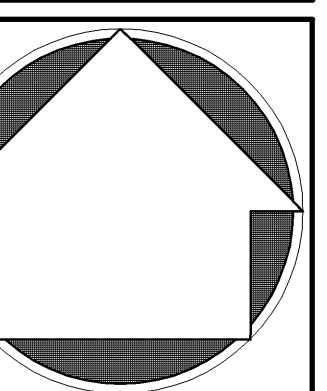


K & M REALTY GROUP, LTD.
 11 SYLVANLEIGH ROAD
 PURCHASE, NEW YORK 10577

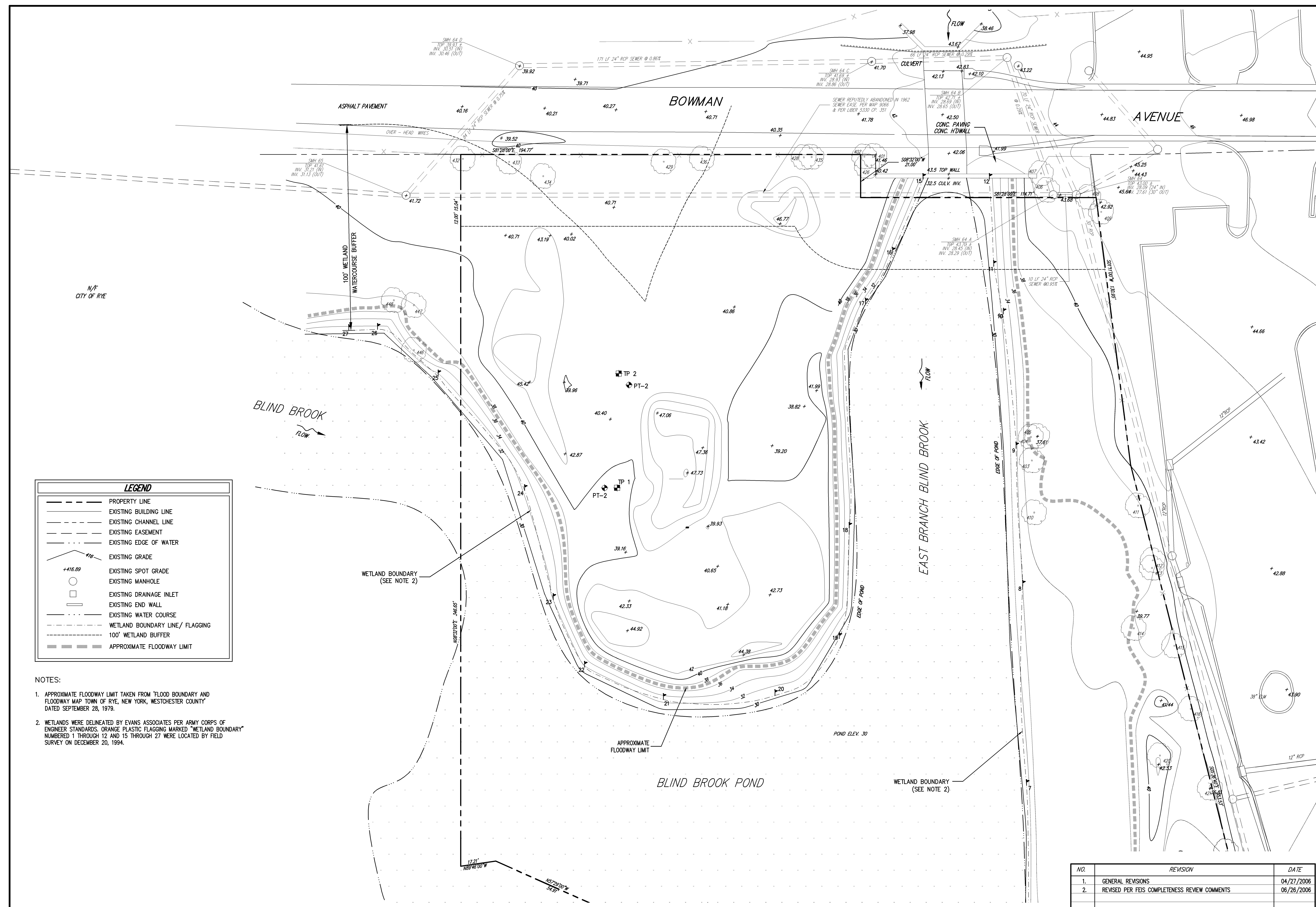
120 Bedford Road
 Armonk, NY 10504
 voice 914.273.5225 • fax 914.273.2102
 www.johmeyerconsulting.com

JMC
 JOHN MEYER CONSULTING, P.C.

EXISTING CONDITIONS AND
 WETLANDS DELINEATION PLAN
 BOWMAN AVE. DEVELOPMENT
 BOWMAN AVENUE
 VILLAGE OF RYE BROOK, NEW YORK



DRAWN: MQ APPROVED: JAR
 SCALE: 1"=20'
 DATE: 04/07/2006
 PROJ. NO.: 2001142
 SITE.dwg 20 SCALE.tbl EXIST.swp
 DRAWING NO.: **M-2**



LEGEND	
	PROPERTY LINE
	EXISTING BUILDING LINE
	EXISTING CHANNEL LINE
	EXISTING EASEMENT
	EXISTING EDGE OF WATER
	EXISTING GRADE
	EXISTING SPOT GRADE
	EXISTING MANHOLE
	EXISTING DRAINAGE INLET
	EXISTING END WALL
	EXISTING WATER COURSE
	WETLAND BOUNDARY LINE/ FLAGGING
	100' WETLAND BUFFER
	APPROXIMATE FLOODWAY LIMIT

- NOTES:
- APPROXIMATE FLOODWAY LIMIT TAKEN FROM "FLOOD BOUNDARY AND FLOODWAY MAP TOWN OF RYE, NEW YORK, WESTCHESTER COUNTY" DATED SEPTEMBER 28, 1979.
 - WETLANDS WERE DELINEATED BY EVANS ASSOCIATES PER ARMY CORPS OF ENGINEER STANDARDS. ORANGE PLASTIC FLAGGING MARKED "WETLAND BOUNDARY" NUMBERED 1 THROUGH 12 AND 15 THROUGH 27 WERE LOCATED BY FIELD SURVEY ON DECEMBER 20, 1994.

COPYRIGHT © 2006 By John Meyer Consulting
 All Rights Reserved. No part of this document may be reproduced, stored in a retrieval system, or transmitted in any form or by means, electronic, mechanical, photocopying, recording or otherwise, without the prior written permission of John Meyer Consulting. Any reproduction or alterations to this document without the written permission of John Meyer Consulting shall render them invalid and unusable.

Previous Editions Obsolete