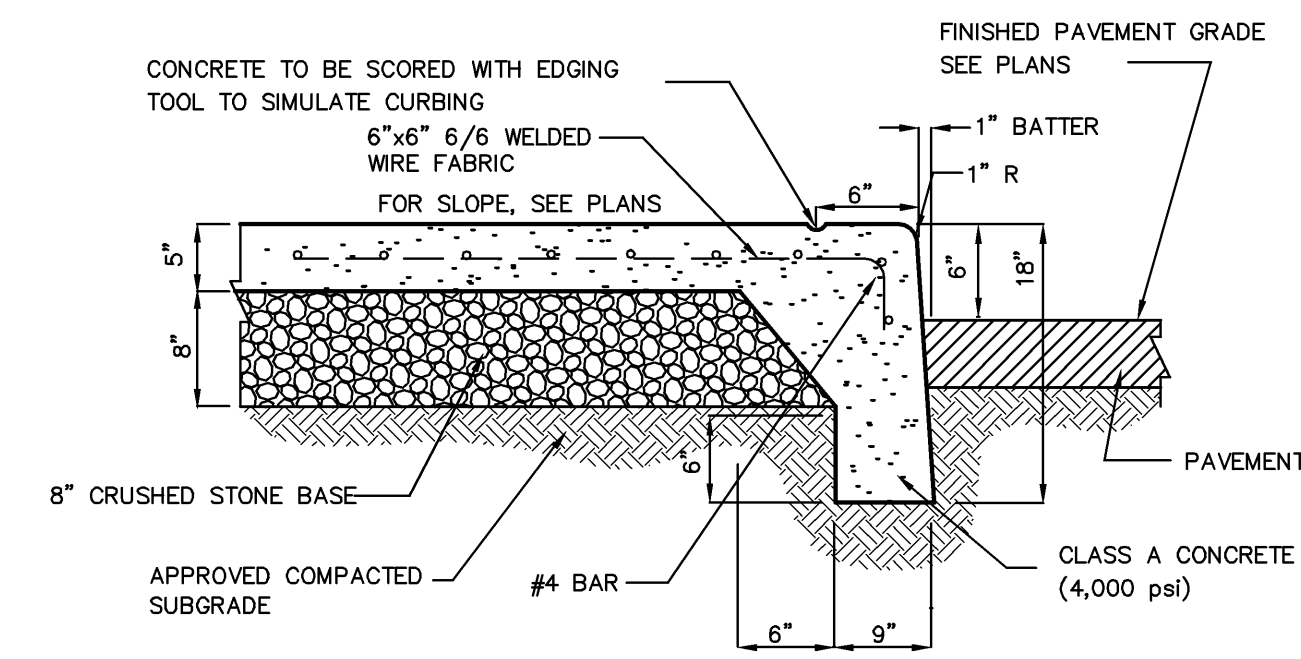


**CONCRETE CURB**

15

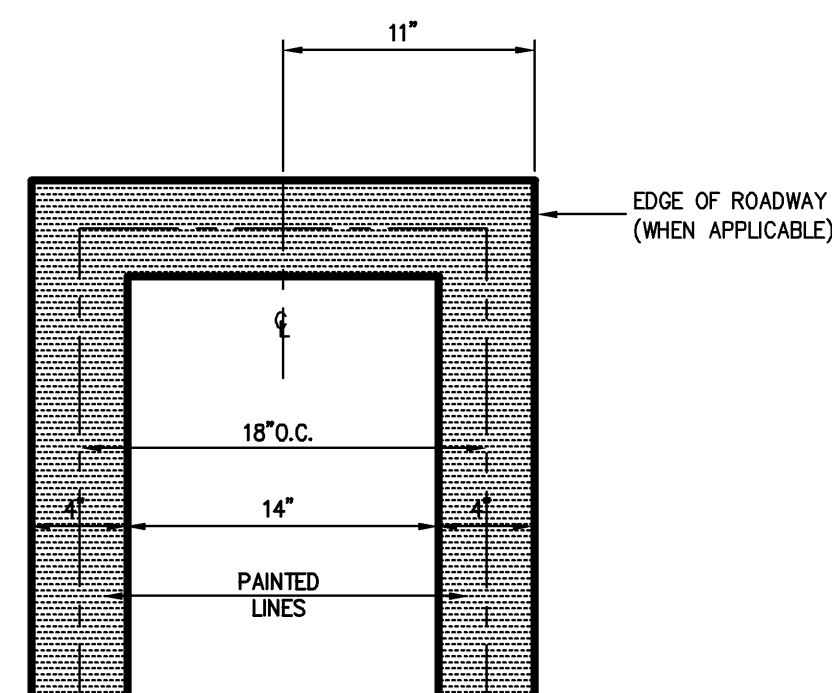


**CONCRETE CURB AND SIDEWALK**

15A

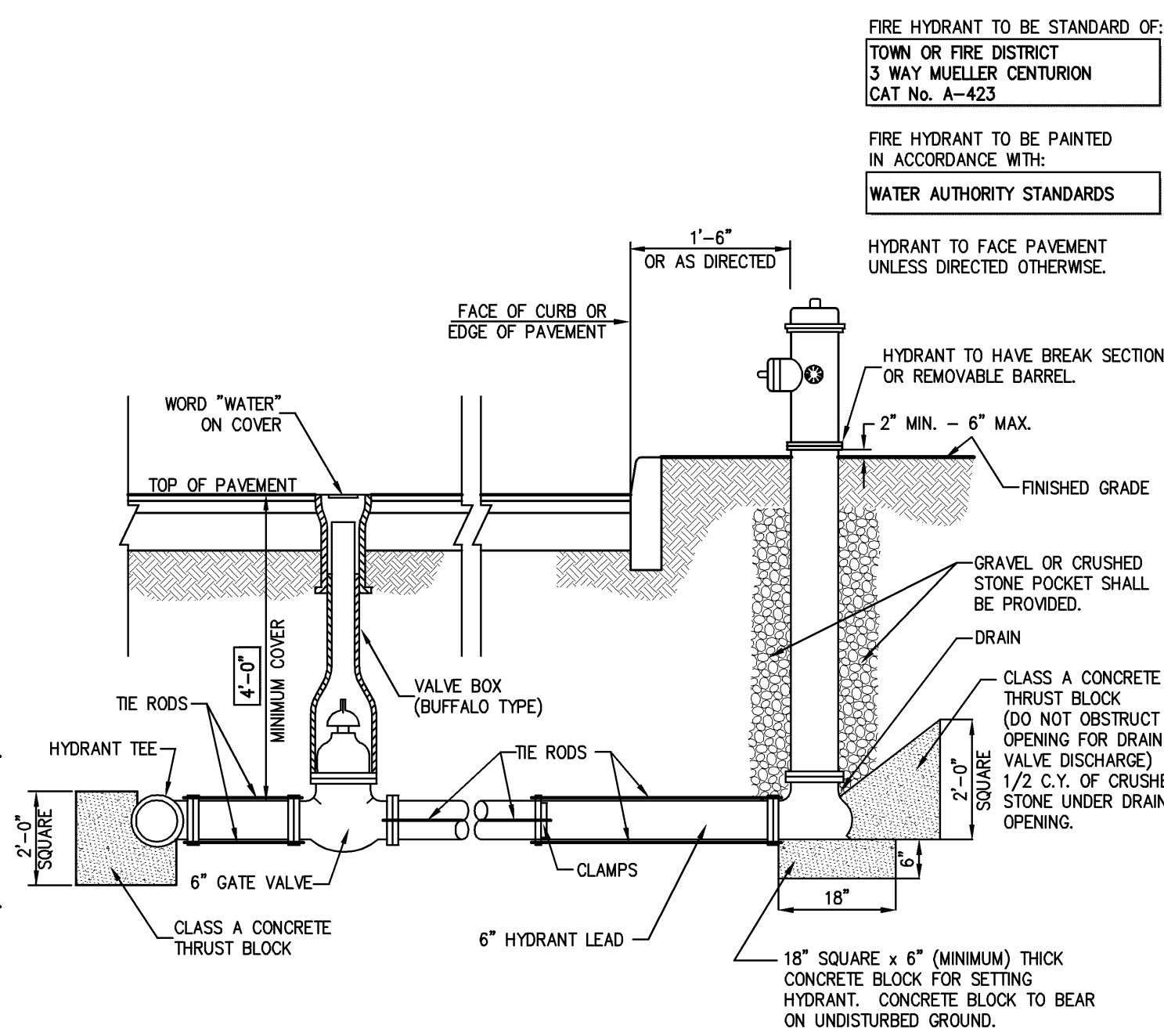
**90° PARKING (PERIMETER)**

19



**STRIPING END ENLARGEMENT**

19A

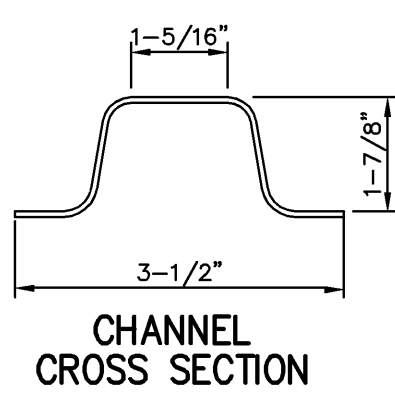


**NOTES:**

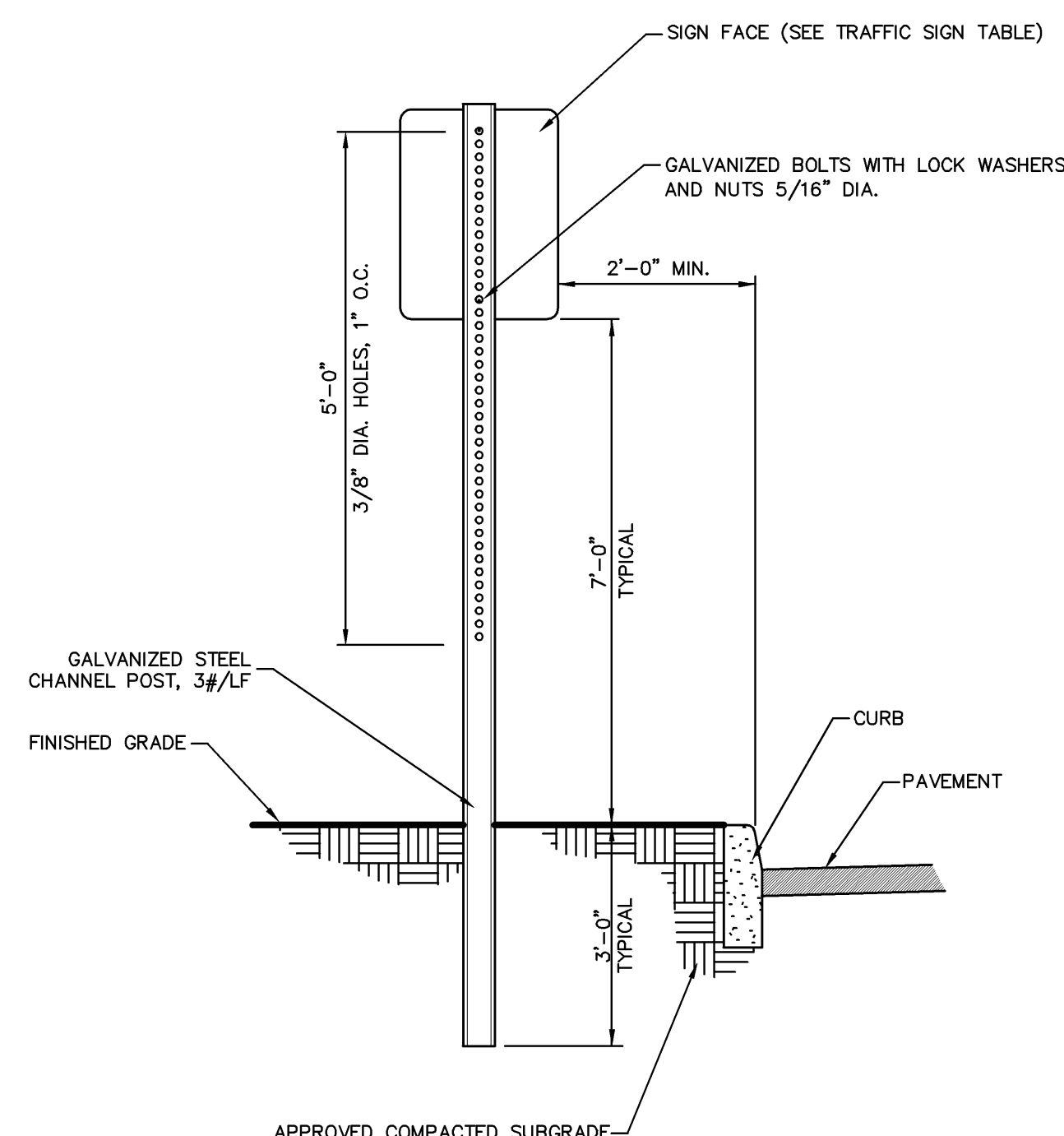
1. ALL CONCRETE THRUST BLOCKS TO BEAR ON UNDISTURBED GROUND.
2. RODDING SHALL CONSIST OF TWO 3/4" THREADED STEEL TIE RODS WITH NUTS AND WASHERS COMPLETE WITH ALL NECESSARY AND REQUIRED CLAMPS, CAREFULLY AND THOROUGHLY COVERED WITH ASPHALT OR OTHER ACCEPTABLE CORROSION RETARDING MATERIAL. IN GENERAL, THE METHOD AND TYPES OF MATERIAL REQUIRED IN THE INSTALLATION OF CLAMPS AND THE RODS SHALL BE IN ACCORDANCE WITH THE LATEST NATIONAL FIRE PROTECTION STANDARDS.
3. HYDRANT DRAINS SHALL NOT BE CONNECTED TO OR WITHIN TEN (10) FEET OF SANITARY SEWERS OR STORM DRAINS.
4. IF GROUND WATER IS FOUND WITHIN SEVEN (7) FEET OF THE SURFACE, HYDRANT DRAINS ARE TO BE PLUGGED. WHEN DRAINS ARE TO BE PLUGGED, THE BARRELS MUST BE PUMPED DRY AFTER USE DURING FREEZING WEATHER. SUCH HYDRANTS SHALL BE IDENTIFIED WITH A VISIBLE MARKING AS APPROVED BY THE WATER AUTHORITY.

**HYDRANT INSTALLATION**

16



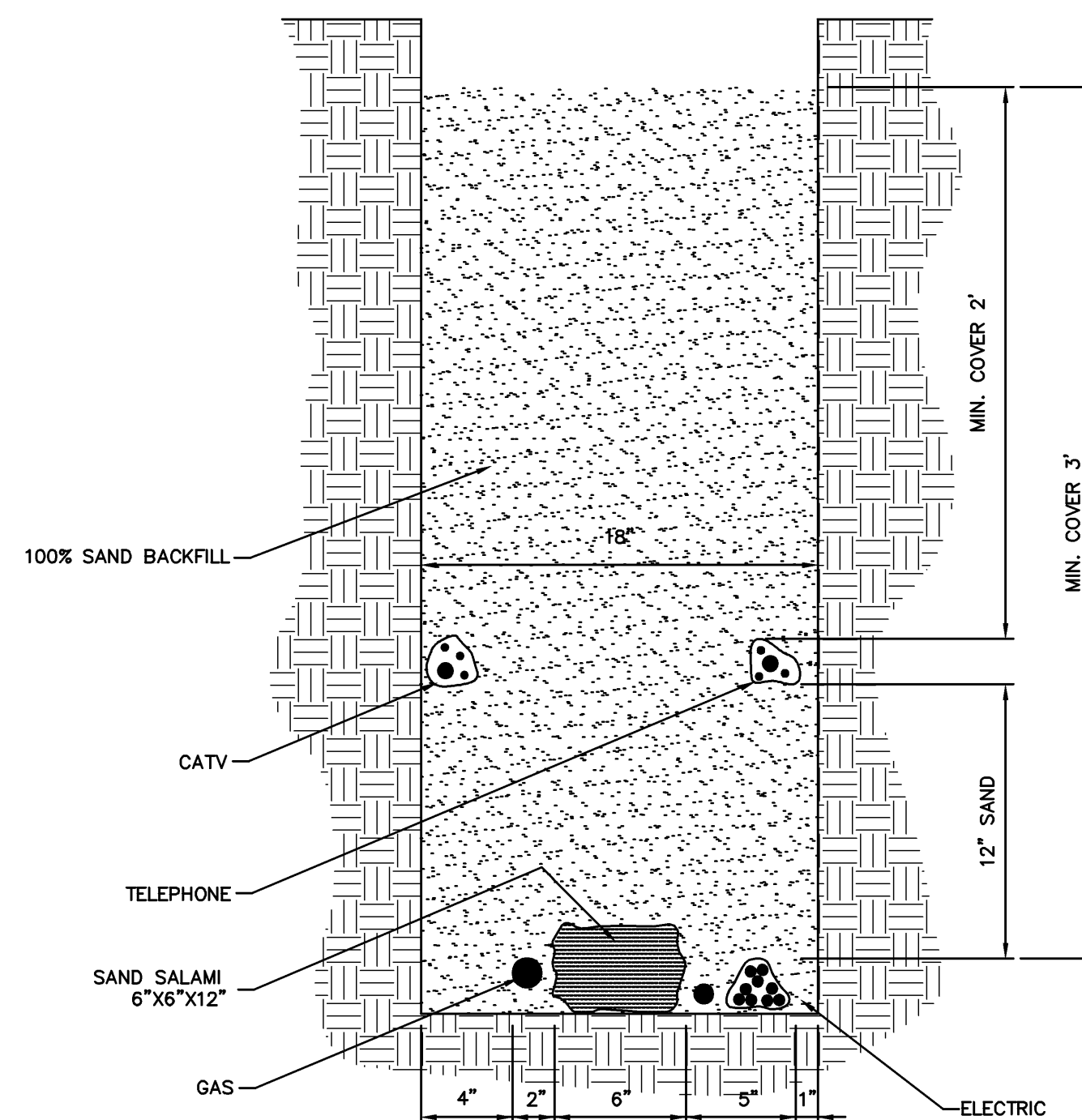
**CHANNEL CROSS SECTION**



**TRAFFIC SIGN POST (STEEL CHANNEL)**

20

**URD INSTALLATION PROCEDURE**



- 1 - 100% SAND
- 2 - 23lb SAND SALAMI
- 3 - BUNDLING
- 4 - STACKING
- 5 - ENGINEERED TRENCHES

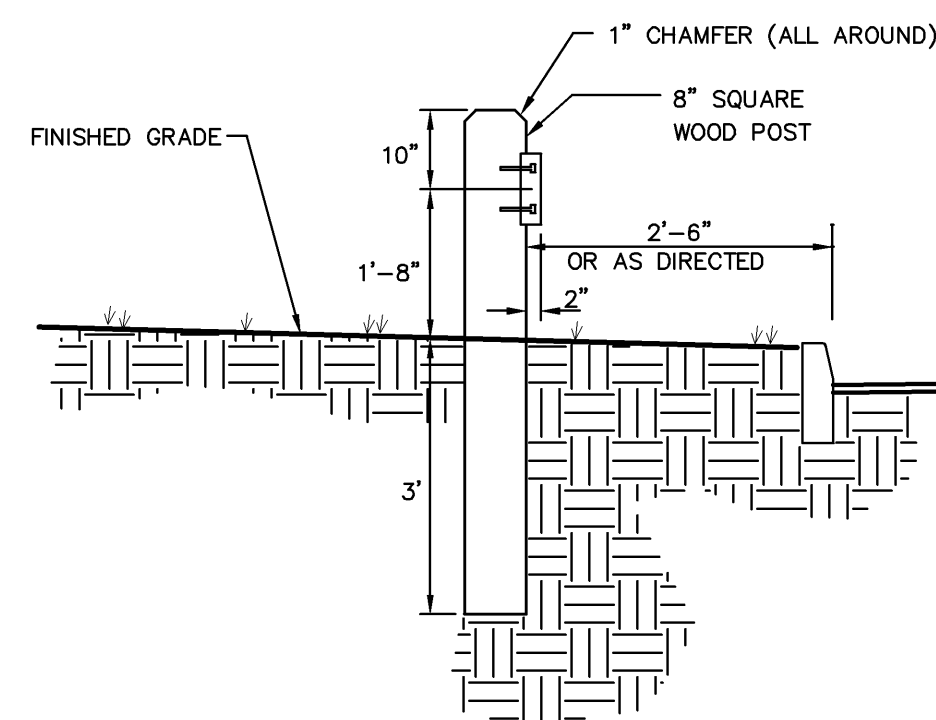
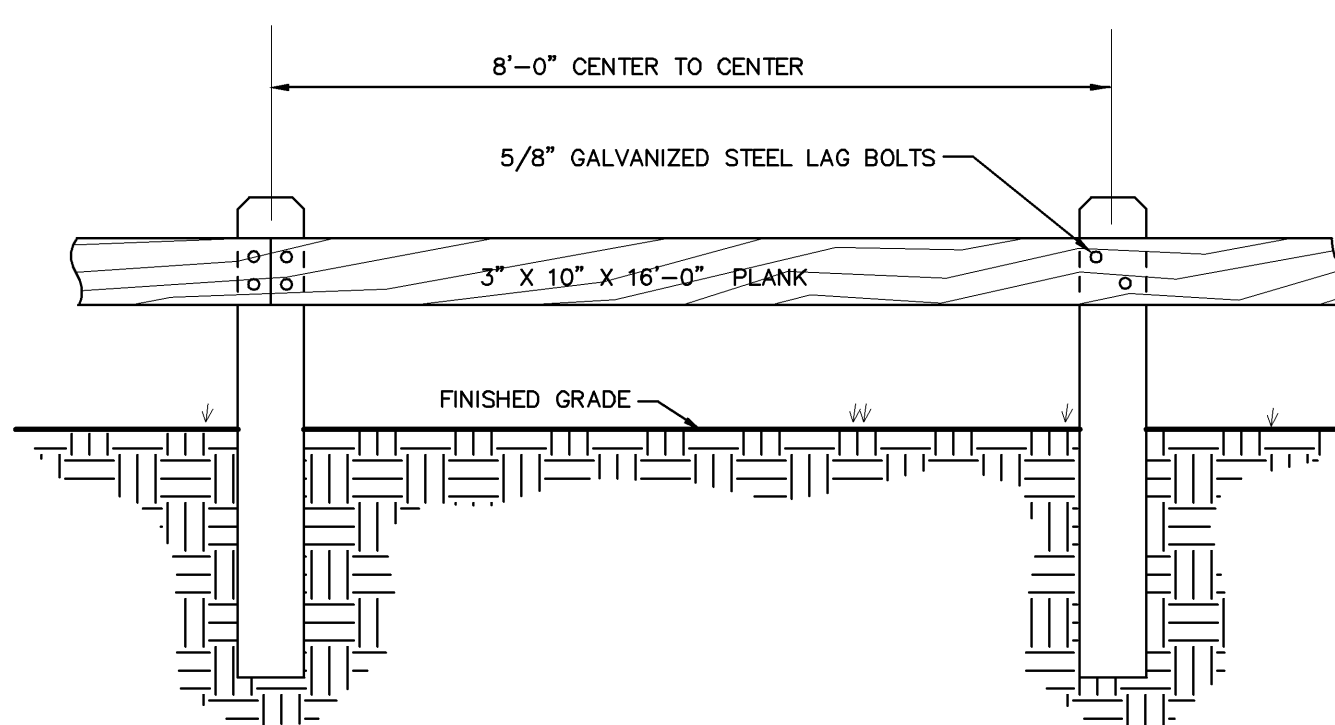
5 POINT PLAN  
E06224-8 PG 19 & 20  
TRENCH FIG. 2C & 2E

**NOTES:**

1. BOTTOM OF TRENCH 48" DEEP IN ROCK CONDITIONS. 4" SAND CUSHION REQUIRED.

**TELEPHONE, GAS, ELECTRIC AND CABLE TV TRENCH**

17

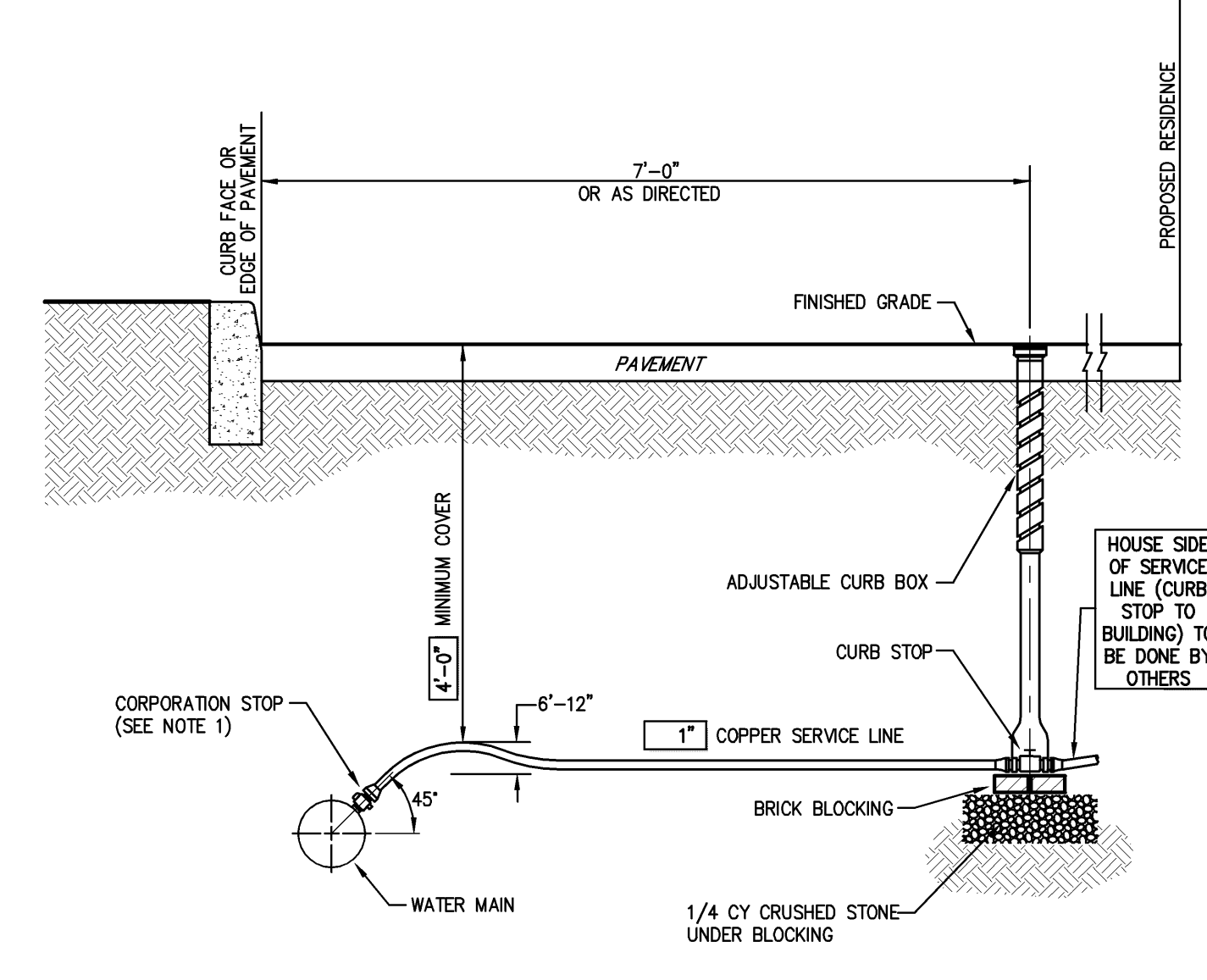


**NOTES:**

1. ALL WOOD TO BE SEASONED NO.1 DOUGLAS FIR, SOUTHERN PINE OR OTHER APPROVED STRUCTURAL LUMBER.
2. ALL WOOD TO BE PRESSURE TREATED WITH AN APPROVED WOOD PRESERVATIVE SUITABLE FOR INSTALLATION IN AND ADJACENT TO GROUND SURFACES.

**WOOD GUIDE RAIL**

21



**CONSTRUCTION MATERIALS**

SIZE	SERVICE LINE (Material)	CORPORATION STOP	CURB STOP	CURB BOX	ENLARGED BASE
3/4"	COPPER	H-15008	H-15214	H-10350	Not Applicable
1"	COPPER	H-15008	H-15214	H-10350	Not Applicable
1-1/2"	COPPER	H-15013	H-15214	H-10350	Not Applicable
2"	COPPER	H-15013	H-15214	H-10350	H-10349

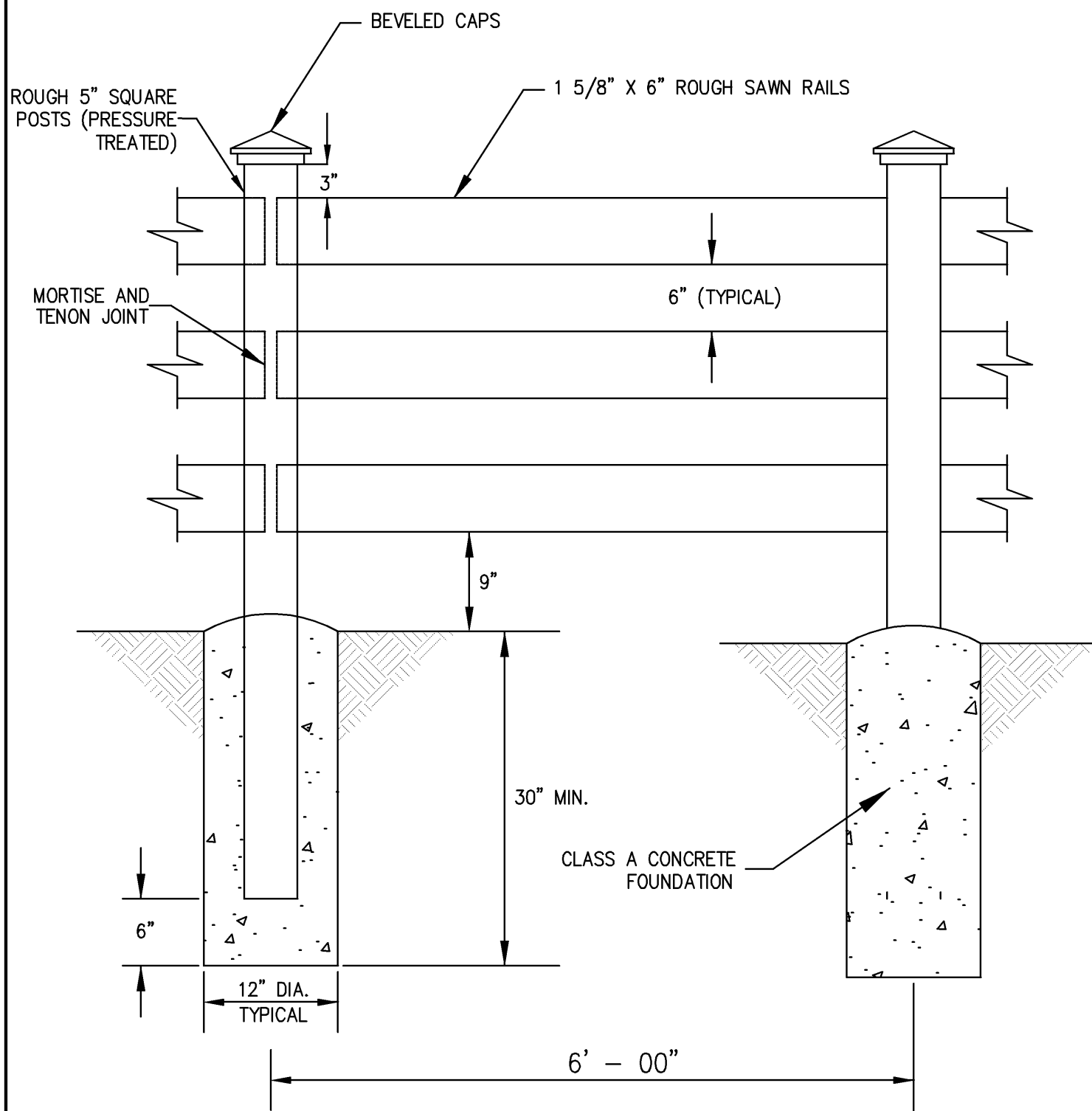
CORPORATION STOP, CURB STOP, CURB BOX AND ENLARGED BASE FOR CURB BOX SHALL BE MUELLER COMPANY OR APPROVED EQUAL. CATALOG NUMBERS SHOWN REFER TO MUELLER COMPANY.

**NOTES:**

1. INSTALLATION OF 1-1/2" AND 2" CORPORATION STOPS SHALL BE MADE IN THE UPPER PIPE QUADRANT BUT MAY BE MADE AT ANGLES LESS THAN 45° IF APPROVED BY THE OWNER'S FIELD REPRESENTATIVE.
2. SERVICE LINE SHALL HAVE NO JOINTS BETWEEN THE WATER MAIN AND CURB STOP.

**SERVICE CONNECTION (2" or less)**

18



**NOTES:**

1. PRIOR TO INSTALLATION OF THE FENCE, THE CONTRACTOR SHALL CHECK THE FENCE LAYOUT WITH THE OWNER'S FIELD REPRESENTATIVE WHO MUST APPROVE THE LAYOUT BEFORE ANY OF THE WORK IS TO BE DONE.
2. FENCE SHALL BE WALPOLE WOODWORKERS POST & RAIL FENCE OR APPROVED EQUAL.
3. FENCE SHALL BE PAINTED AS DIRECTED BY THE OWNER OR HIS ON SITE REPRESENTATIVE.

**POST AND RAIL FENCE**

22

DATE	REVISION	GENERAL REVISIONS
04/27/2006		
06/26/2006		

120 Bedford Road  
Armonk, NY 10504  
voice 914-273-5225 • fax 914-273-2102  
www.johnmeyerconsulting.com

**JMC**  
JOHN MEYER CONSULTING, P.C.

**SITE DETAILS**

**BOWMAN AVE. DEVELOPMENT**  
BOWMAN AVENUE  
VILLAGE OF RYE BROOK, NEW YORK

DRAWN: CG	APPROVED: JAR
SCALE: N.T.S.	
DATE: 04/07/2006	
PROJ. NO.: 2001142	
DETAILS.dwg	DET-10.tbl
DRAWING NO.:	
<b>M-10</b>	